

SUMMARY OF THE  
PRELIMINARY  
REQUEST FOR LAND  
RECOGNITION



MAN-MADE  
LANDSCAPES of the  
MONTEREGIAN  
HILLS

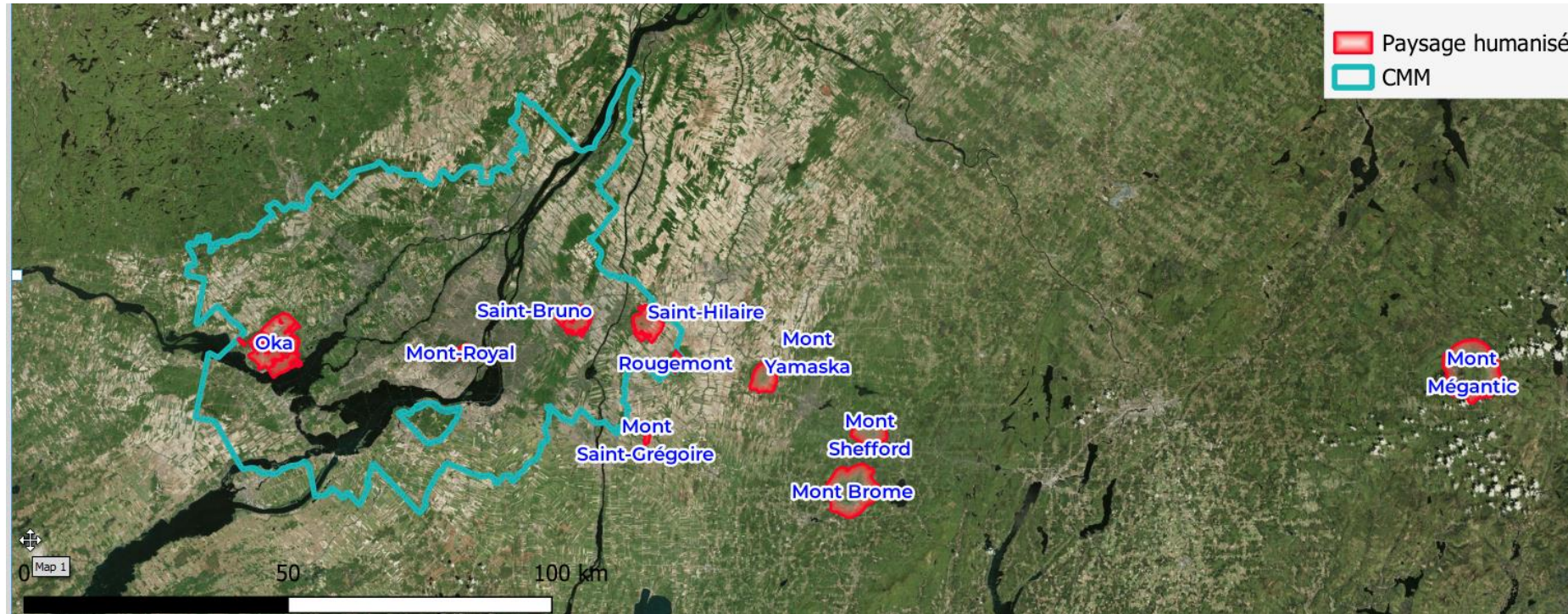


# AN ICONIC NATURAL LANDSCAPE

---

# TEN MONTEREGIAN HILLS

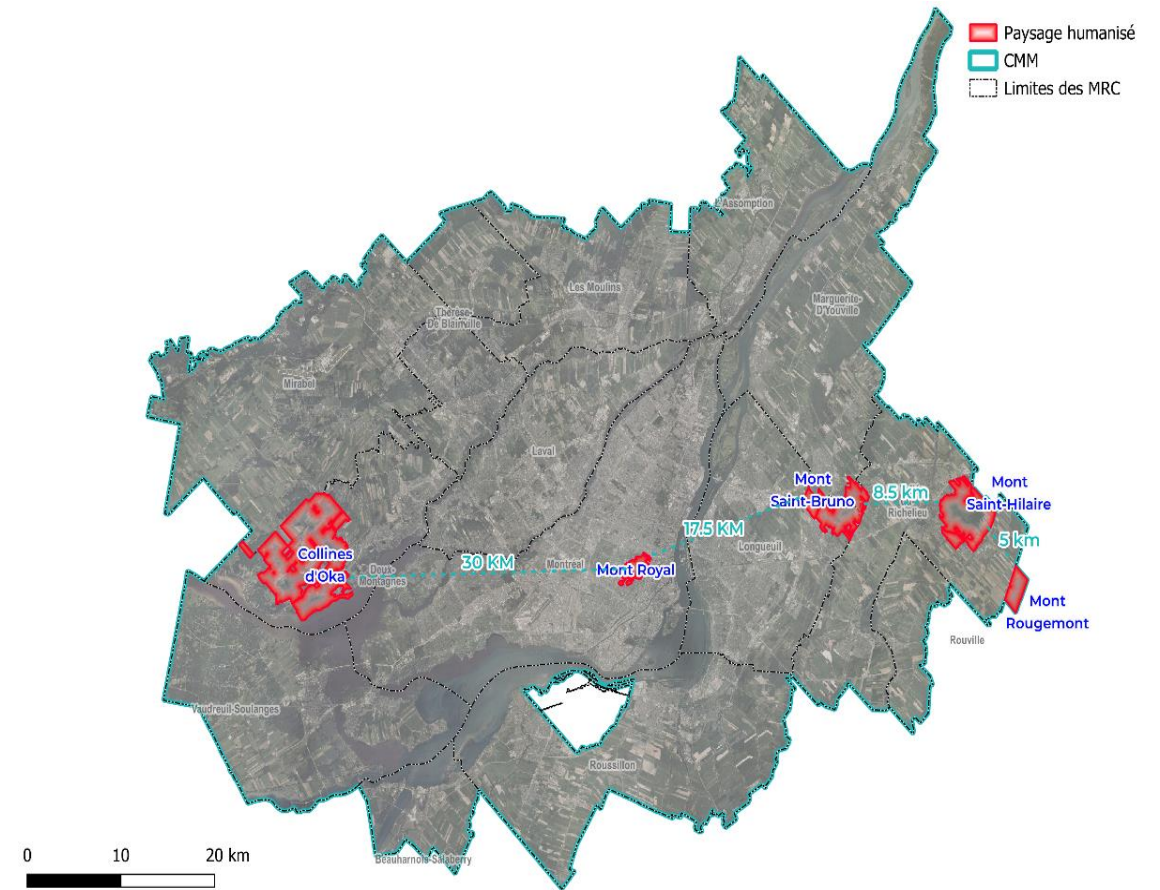
The Monteregian Hills are a group of ten hills in Quebec, connected by their shared geological origin. They stretch over 245 km through one of the most densely populated regions of the province.



# FIVE MONTEREGIAN HILLS LOCATED IN THE CMM

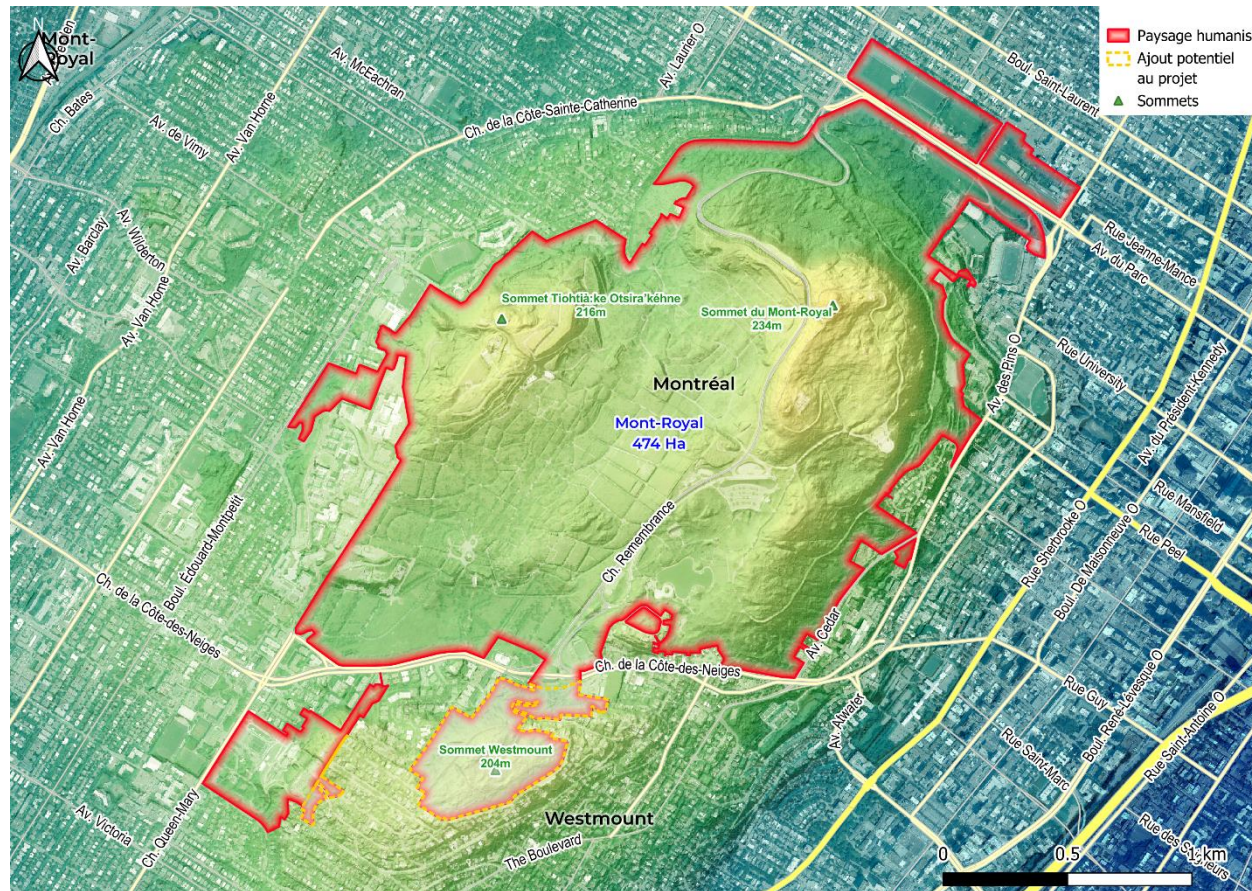
Five Monteregian Hills are situated within the territory of the CMM:

- Oka Hills
- Mont Royal
- Mont Saint-Bruno
- Mont Saint-Hilaire
- Mont Rougemont (partially)



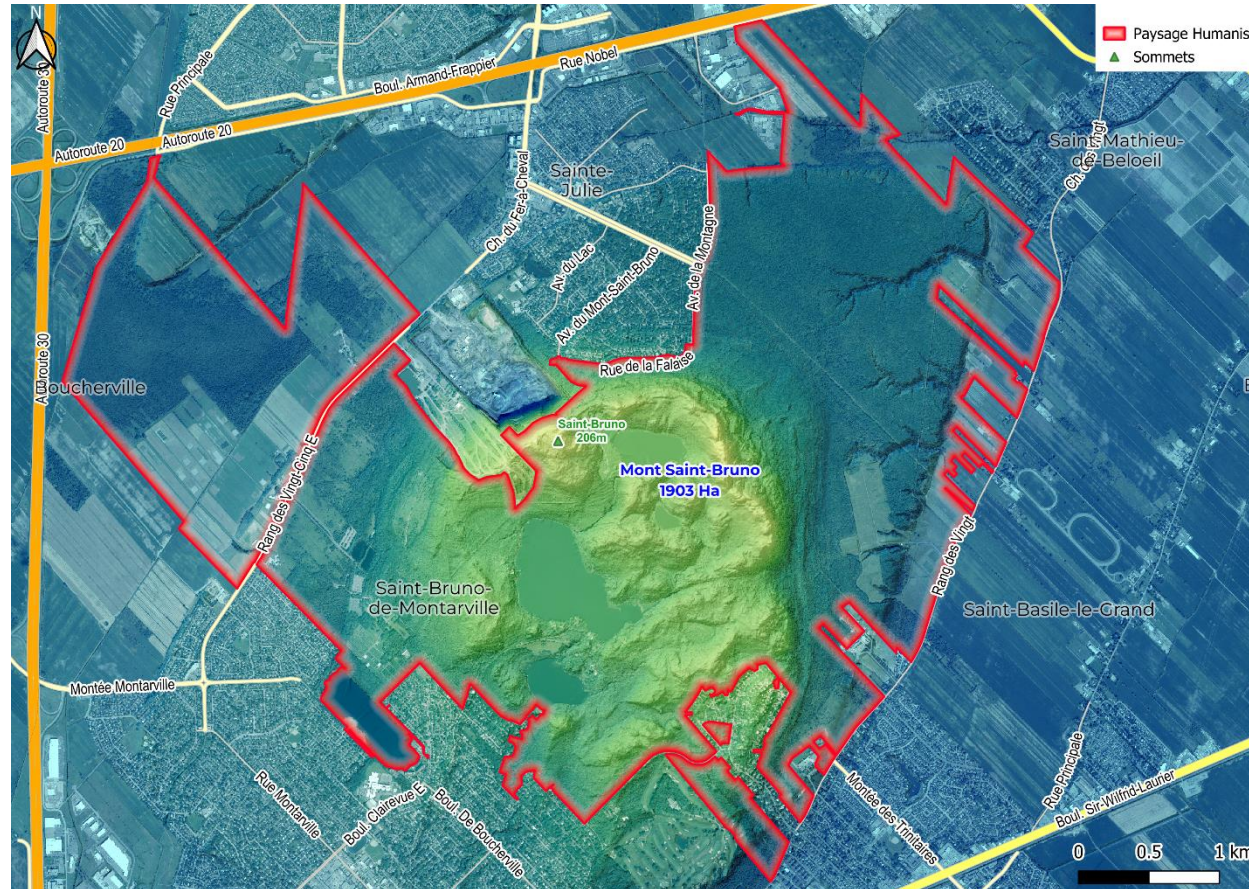


# MOUNT ROYAL



Sources : Orthophoto et carte topographique, 2023. Traitement CMM, 2024.

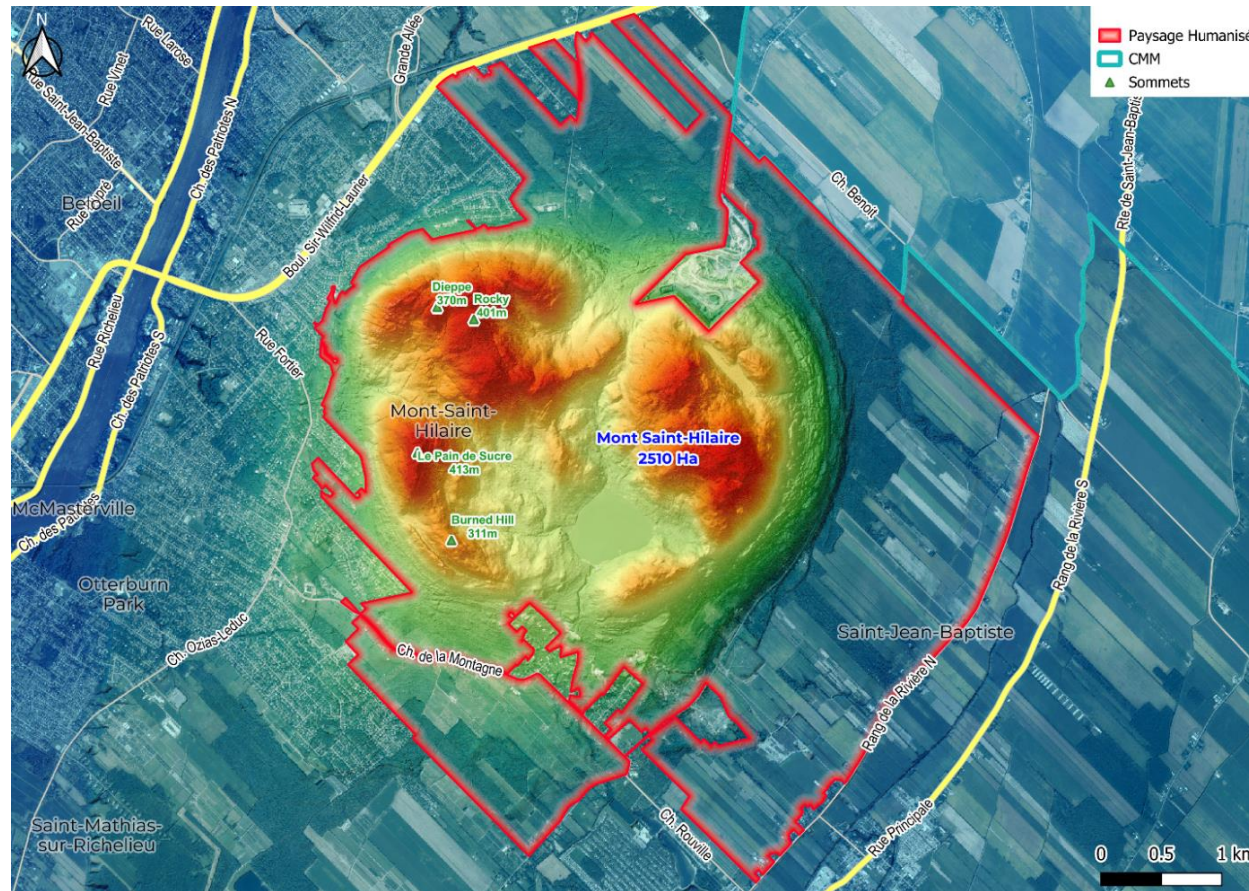
# MOUNT SAINT-BRUNO



Sources : Orthophoto et carte topographique, 2023. Traitement CMM, 2024.

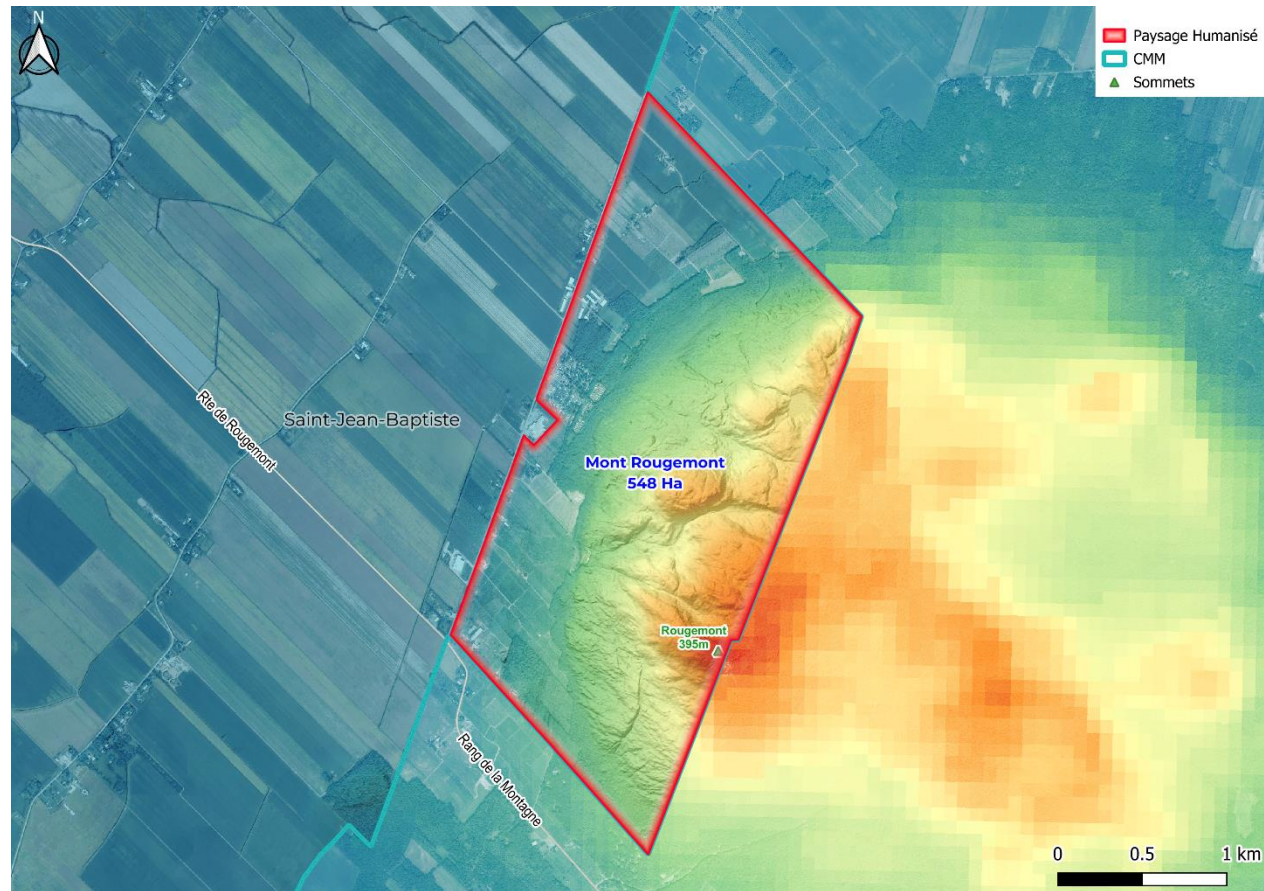
AN ICONIC NATURAL LANDSCAPE

# MOUNT SAINT-HILAIRE



Sources : Orthophoto et carte topographique, 2023. Traitement CMM, 2024.

# MOUNT ROUGEMONT



Sources : Orthophoto et carte topographique, 2023. Traitement CMM, 2024.

# A RICH BUT FRAGILE NATURAL HERITAGE

---

Sentier de la  
Sauvagine ↑



# A RICH NATURAL HERITAGE TO PRESERVE

Diverse ecosystems



Abundant in biodiversity



An essential element of ecological connectivity



A natural filter for air and water quality

A RICH HERITAGE TO PRESERVE

# DIVERSE ECOSYSTEMS

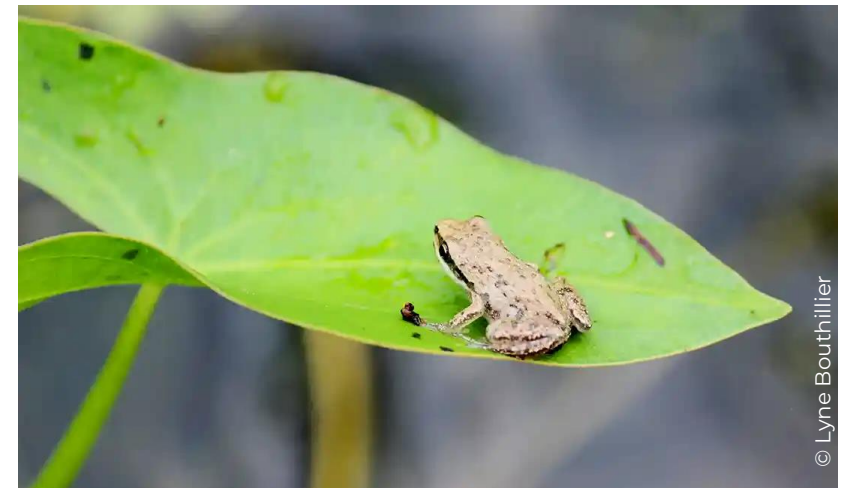
The Monteregian Hills include a high proportion of mature forest areas and several wetlands, some of which are rare, aquatic environments, and fallow lands.

Concerned area		Oka Hills	Mont Royal	Mont Saint-Bruno	Mont Saint-Hilaire	Mont Rougemont	Compilation
Forested areas	Forest stands (%)	49.9	44.7	71.9	66.6	67.7	57.1
	Forest maturity	Mature and old	Mature and old	Mature	Mature and old	Mature and old	Mature
	Dominant species	Maple	Maple, oak, ash	Maple	Maple	Maple	Maple
	Ecological groupings	White pine , red pine			White pine, red oak	Hemlock with hardwoods, red oak	White pine , red pine, hemlock with hardwoods, red oak
	Number of exceptional forest ecosystems	7		9	10	1	27
Wetlands (ha)		647	0.75	183.2	11	0	841.95
Fallow lands (ha)		260		152	45,9		457.9
Watersheds		Rivière du Chêne et rivière des Outaouais		Rivière l'Acadie et ruisseau Beloeil	Rivière des Hurons et ruisseau Cochon	Ruisseau à l'Ours	
Main watercourses		La Petite Rivière, ruisseau Rousse, Rivière aux Serpents		Ruisseau des Frères, Ruisseau du Moulin, ruisseau Beloeil, Ruisseau Bernard		Ruisseau à l'Ours (br-18, br-27, br-28)	Approximately 220.5 km of identified watercourses

# AN AREA RICH IN BIODIVERSITY

In the Monteregian Hills, more than 89 plant species and 47 animal species are in precarious situations, with some facing the threat of extinction, such as the Western chorus frog, peregrine falcon, and mayapple.

	Oka Hills	Mont Royal	Mont Saint-Bruno	Mont Saint-Hilaire	Mont Rougemont	Compilation
Plant species with precarious status	51	16	22	19	6	89
Animal species with precarious status	29	10	13	5	3	47

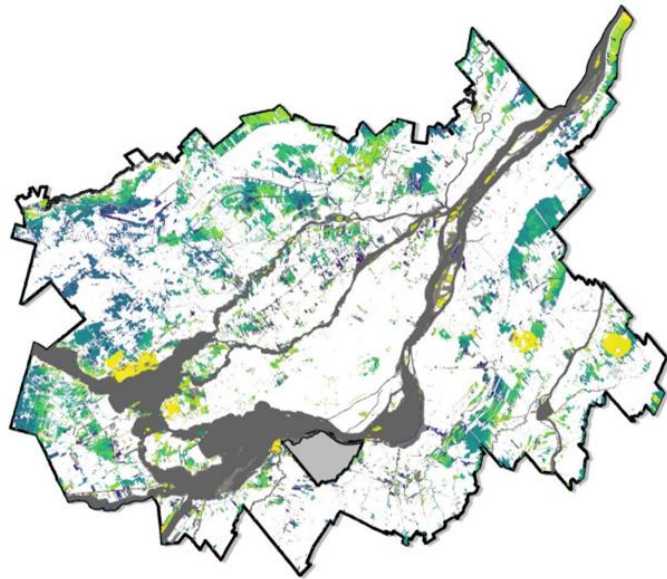


Western chorus frog

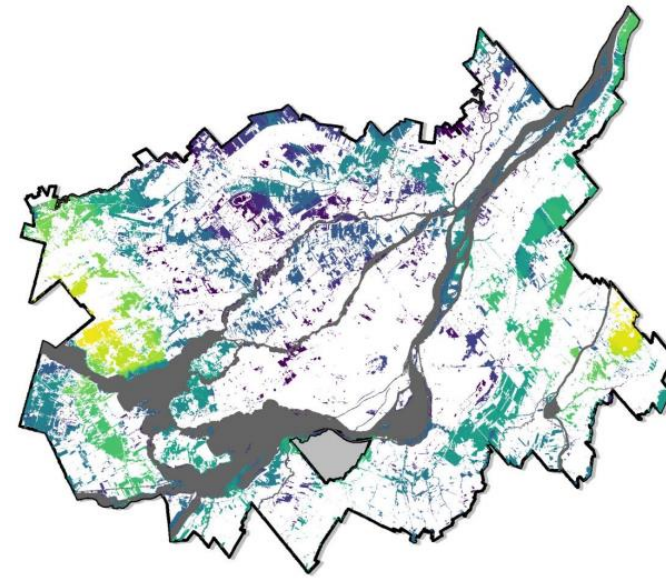
© Lyne Bouthillier

# AN ESSENTIAL ELEMENT OF ECOLOGICAL CONNECTIVITY

The Monteregian Hills play a crucial role in maintaining ecological connectivity at the local and regional level.



Contribution of natural environments to maintaining ecological connectivity in the CMM territory  
Source: Habitat, 2023



Mapping of natural environments in the CMM based on their contribution to maintaining the ecological connectivity network evaluated at the scale of the St. Lawrence Lowlands, Source: Habitat, 2023



# PAN-MONTEREGIAN CHALLENGES THAT JEOPARDIZE THIS PRECIOUS RESOURCE

---

- Land development pressures
- Different visions regarding land use
- Overuse
- Unsustainable resource extraction
- Overpopulation of white-tailed deer and habitat deterioration
- Proliferation of invasive exotic species
- Degradation of wetlands and water environments
- Fragmentation of natural environments
- Adaption to climate change
- Vulnerability of built, landscape, and agricultural heritage



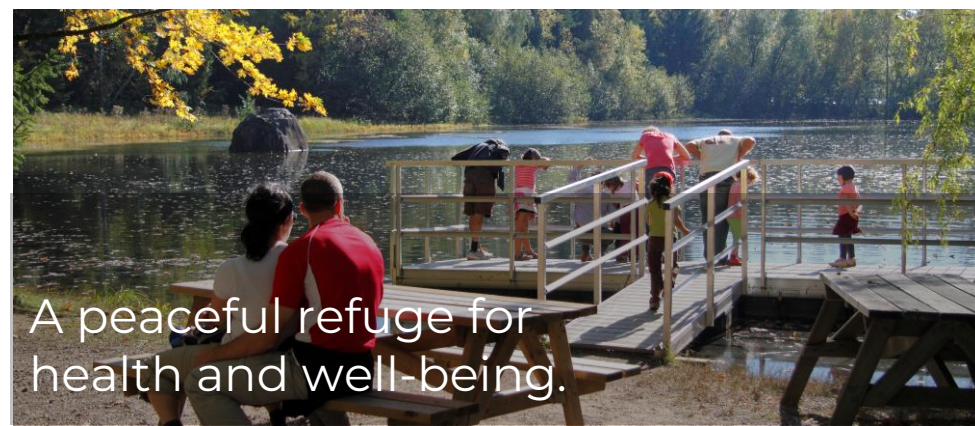
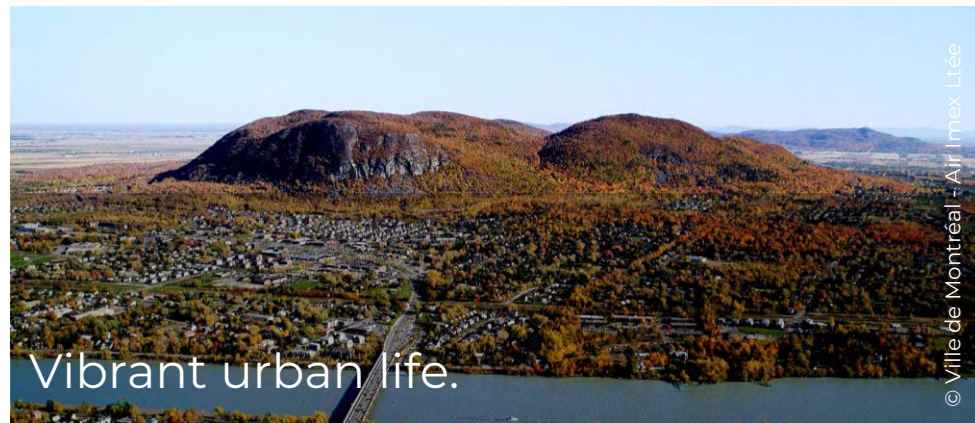
Damage caused by the emerald ash borer on Mount Royal

A photograph of a two-story stone house with a snow-covered roof, partially obscured by a dense forest of bare trees in a winter setting. The ground is covered in snow, and the sky is clear and blue. The text 'INHABITED HILLS' is overlaid in the center of the image.

# INHABITED HILLS

---

# COEXISTENCE BETWEEN HUMANS AND THE ENVIRONMENT

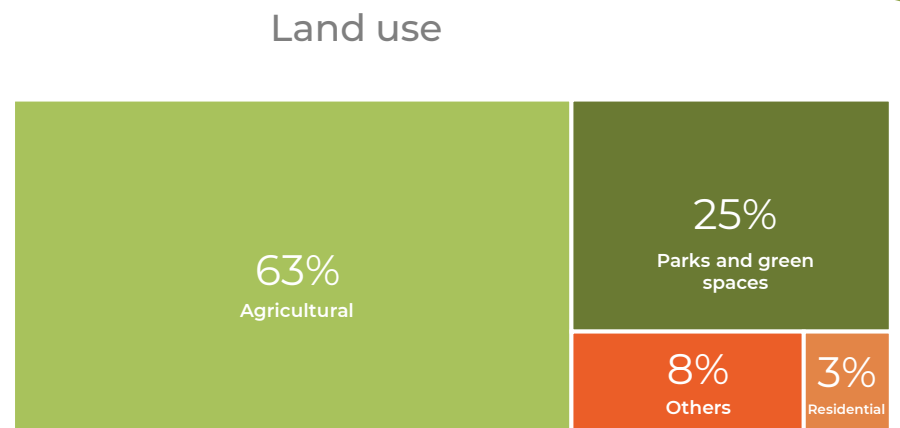
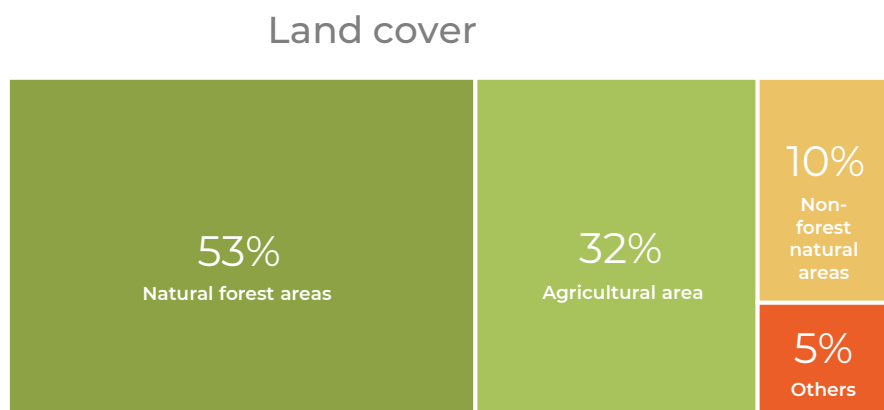


# LAND OCCUPATION

The territory of a man-made landscape can include natural environments, agroforestry or agricultural areas, residential zones, and certain infrastructures. However, the proportion covered by residential areas and infrastructures should be minimal ([MELCCFP](#)).

Land use in the Monteregian Hills is examined from two perspectives :

- Land cover (components covering the earth's surface)
- Land use (land registry)



Through a geographical analysis, both perspectives demonstrate that natural and agricultural components are the most dominant.

# ECONOMIC ACTIVITIES

---

## Agriculture

Historically, agriculture has been practiced on the slopes and around several Monteregian Hills. Some agricultural activities, such as maple syrup production, apple growing, viticulture (grapevines), and dairy farming, have been practiced since the 19th century.

Fruit trees thrive in the fertile soils of the Monteregian Hills, which were formed from loose deposits left by the retreat of the Champlain Sea.



© Ville de Montréal - Air Imex Ltée

# ECONOMIC ACTIVITIES

## Tourism and recreational activities

Economic activities related to tourism and outdoor activities depend on the natural environment, which is an important aspect of the Monteregian Hills.



LE SENTIER  
CYCLABLE  
ET PÉDESTRE  
ENTRE OKA ET MONT-SAINT-HILAIRE



The 143 km long cycling and hiking trail between Oka and Mont-Saint-Hilaire connects the Monteregian Hills and ensures connectivity with local, regional, and national cycling networks.

# LANDSCAPE & HERITAGE

---

The hills' topography provides a variety of scenic views that harmonize with nature, featuring cultivated fields and forested areas that blend seamlessly with rocky and wooded hills.

In several municipalities of the Monteregian Hills, the cadastral division follows the old agricultural seigneurial lands, with winding roads and country lanes that snake at the foot of the hills, connecting the villages.

Several components of the metropolitan landscape of interest are identified in the PMAD and are linked to the Monteregian Hills.



© municipalité de Saint-Jean-Baptiste

# MONTEREGIAN HILLS : MAN-MADE LANDSCAPE PROJECT

---



# WHY PROTECT THE MONTEREGIAN HILLS?

- **Significant heritage and a one-of-a-kind natural areas** that features distinct geological formations, a rich variety of biodiversity, and a diverse blend of built, natural, and agricultural landscapes.
- Increasing need to **preserve biodiversity in southern Quebec** to adapt to climate change and reduce impacts from development pressures that degrade and fragment ecosystems as well as attain the CMM's objective of protecting 30% of its natural habitats by 2030.



© Mont-Royal, Coalition des Monteregian Hills

# CREATING CONSERVATION BUFFER ZONES AROUND EXISTING PROTECTED AREAS

Achieving man-made landscape status will enhance biodiversity protection around already protected ecological cores by creating **conservation buffer zones** in inhabited natural spaces.

As illustrated on the map, the man-made landscape status extends the targeted conservation area beyond existing protected areas, while allowing various sustainable activities in this buffer zone.



Source: MELCCFP, 2020; RMN, 2022. Traitement CMM, 2024.

# WHAT IS A MAN-MADE LANDSCAPE?

---

A man-made landscape is an area protected for inhabited environments.



Harmonious interaction between humans and nature



Man-made landscape is *“an area established to protect the biodiversity of an inhabited area of water or land whose landscape and natural features have been shaped over time by human activities in harmony with nature and present outstanding intrinsic qualities for conservation of which depends to a large extent on the continuation of the practices that originally shaped them”*.

Natural Heritage Conservation Act  
(chapter C-61.01)

# WHY GRANT THE STATUS OF MAN-MADE LANDSCAPE TO THE MONTEREGIAN HILLS?

---

- The most suitable protected area status for the Monteregian Hills is that of a **man-made landscape**, as it specifically aims to protect and enhance inhabited environments shaped by human activity.
- This protected area designation allows for the continuation of activities that are carried out in harmony with nature.
- Obtaining the status of a cultural landscape will allow:
  - ✓ **Recognition** of the remarkable character of this inhabited natural territory
  - ✓ Consolidation of **shared commitments** to preserve the natural and cultural landscape heritage of the Monteregian Hills

# THE PROJET

---

- The project seeks to equip Greater Montreal with a vital conservation **planning tool** to enhance efforts against climate change and safeguard natural and semi-natural environments.
- The value of recognizing man-made landscapes lies in its ability to support a **flexible and context-driven management approach**. The IUCN category V promotes a diverse range of strategies for conservation, allowing different levels of governance to collaborate effectively.
- Under the man-made landscape status, municipal authorities will continue to manage land while upholding goals for protecting natural, cultural, and landscape heritage. At the same time, private owners will maintain their full property rights, in accordance with existing laws and regulations.
- To coordinate the stakeholders in this ambitious project, the CMM serves as the lead applicant. The initiative involves two agglomerations, three regional county municipalities (RCMs), eight municipalities, and various organizations and institutions within the area.

# VISION STATEMENT

---

By 2050, the Monteregian Hills will be celebrated for their **beneficial impacts** on ecosystem and human health, their scenic beauty, and their role in supporting biodiversity amid **climate change**. The coexistence of urban spaces, agricultural practices, and biodiversity serves as a model, improving the quality of life for residents. Both the community and local authorities will collaborate to preserve and enhance the **heritage and unique characteristics** of each Monteregian Hill.



# PROJECT GOALS

---

The initiative seeks to **establish a protected area for a minimum of 25 years** to safeguard the distinctive natural and cultural landscapes within this inhabited ecosystem.



In addition to **biodiversity conservation**, which is the priority of a man-made landscape, the project includes objectives related to sustainable agriculture as well as the preservation of cultural and heritage within the landscape.

# ORIENTATIONS & OBJECTIVES

The orientations and objectives are at the heart of the project. They will be essential for the conservation plan that will be developed in the next phase of the project.

1

Recognize, protect, and enhance biodiversity \*



2

Contribute to the sustainability, enhancement, and diversity of the territory and development of agricultural activities



3

Recognize, protect, and enhance the components of the landscape as well as the cultural and built heritage



4

Consolidate sustainable and educational recreational tourism activities while respecting the carrying capacity of natural environment



\* In the event of incompatibility among the four orientations, the first will take precedence.

MAN-MADE LANDSCAPE PROJECT		
<b>Orientation 1</b>		<b>Cross-cutting Objectives</b>
Recognize, protect, and enhance biodiversity		
<b>Objectives</b>		
1.1	Share knowledge about ecological richness, its vulnerability, and its benefits to humans	
1.2	Promote voluntary conservation initiatives	
1.3	Maintain habitat diversity, rehabilitate degraded environments, and improve the connectivity of natural environments	
1.4	Preserve forest canopy of interest by maintaining their ecological integrity	
1.5	Maintain the integrity of water networks and wetlands	
1.6	Support the protection, maintenance, or restoration of riparian buffers	
1.7	Protect animal and plant species with precarious status	
<b>Orientation 2</b>		
Contribute to the sustainability, enhancement, and diversity of the territory and development of agricultural activities		
<b>Objectives</b>		
2.1	Maintain and improve biodiversity and ecological connectivity in agricultural areas by prioritizing already identified corridors	
2.2	Support agro-environmental practices	
2.3	Maintain the agricultural zone's vocation that has shaped the territory and promote its vitality	
2.4	Recognize and enhance agriculture as part of the territory's identity	
2.5	Facilitate coexistence by improving links between farmers and the population	
2.6	Support agritourism, an essential tool for the diversity and vitality of agricultural activities across the territory	
<b>Orientation 3</b>		
Recognize, protect, and enhance the components of the landscape as well as the cultural and built heritage		
<b>Objectives</b>		
3.1	Identify and protect landscape components of interest (viewpoints towards the hills, emblematic sectors, heritage buildings, etc.)	
3.2	Enhance heritage through cultural land use initiatives while respecting natural components (sites, emblematic institutions, and landscape components of interest, etc.)	
3.3	Enhance heritage components through education, discovery, and awareness	
<b>Orientation 4</b>		
Consolidate sustainable and educational recreational tourism activities while respecting the carrying capacity of natural environment		
<b>Objectives</b>		
4.1	Facilitate travel by public and active transport to recreational tourism destinations	
4.2	Develop strategies to manage recreational tourism activities respecting residents, owners, and sensitive agricultural and natural environments	

# PROJECT RESULTS

## Society

- ✓ Conservation of interconnected biodiversity reservoirs of interest in southern Quebec.
- ✓ Active contribution to the fight against climate change and international conservation objectives.
- ✓ Access to protected natural environments for recreational tourism activities.
- ✓ Recognition and protection of several aspects of collective heritage.
- ✓ Creation of a model of harmonious relations between natural and anthropogenic activities in inhabited natural environments.
- ✓ Conservation project distinguished by its exemplarity and scope.

## Farmers and owners

- ✓ Support to tackle current challenges in preserving biodiversity in agroecosystems and adapting to climate change.
- ✓ Sustainability and enhancement of agricultural activities as economic, landscape, and cultural components of interest.
- ✓ Creation of economic development opportunities.

## Residents

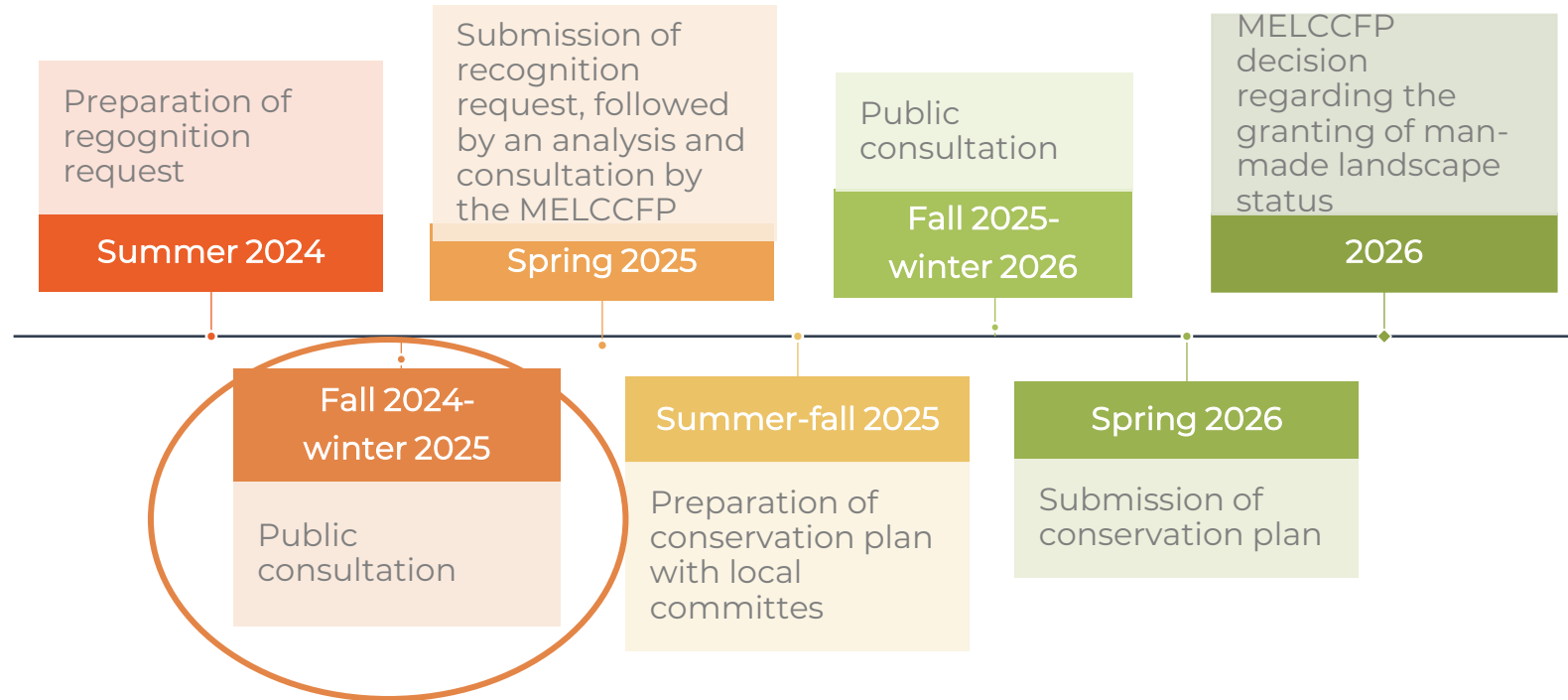
- ✓ Creation of unique environments that enhances pride and quality of life.
- ✓ Strengthening of ecosystem benefits on physical and psychological health.
- ✓ Establishment of an inclusive space for dialogue to support to harmonious coexistence.



# PROJECT PHASES AND COMMUNITY CONSULTATION

---

# PROJECT PHASES



# CONSERVATION PLAN : A NEW CHAPTER TO BE WRITTEN TOGETHER

---

Following the submission for the recognition request and receiving the government's eligibility notice, we will begin preparing a conservation plan to implement the vision and orientations of the project.

An additional public consultation period will ensure that this plan meets expectations.

Year	Man-made landscape project
2025	<ul style="list-style-type: none"><li>• Submission of recognition request</li><li>• Receipt of the eligibility notice from MELCCFP</li><li>• Preparation of conservation plan</li><li>• Public consultation</li></ul>
2026	<ul style="list-style-type: none"><li>• Submission of conservation plan</li><li>• Approval of the conservation plan by the MELCCFP</li><li>• MELCCFP decision regarding the granting of humanized landscape status</li><li>• Start of the implementation of the conservation plan.</li></ul>
2031	<ul style="list-style-type: none"><li>• Report on the first five years of the implementation of the conservation plan.</li></ul>

# PUBLIC PARTICIPATION

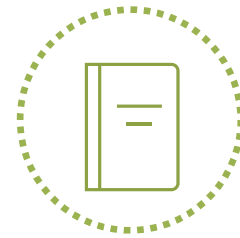
---

To share your questions and comments on the Monteregian Hills man-made landscape project, we invite you to:



Fill out the  
survey

or



Submit a  
memoire

by November 29, 2024.

[participer.cmm.qc.ca](https://participer.cmm.qc.ca)



© Jacinthe Gauthier, Coalition des Montérégien Hills



Communauté  
métropolitaine  
de Montréal